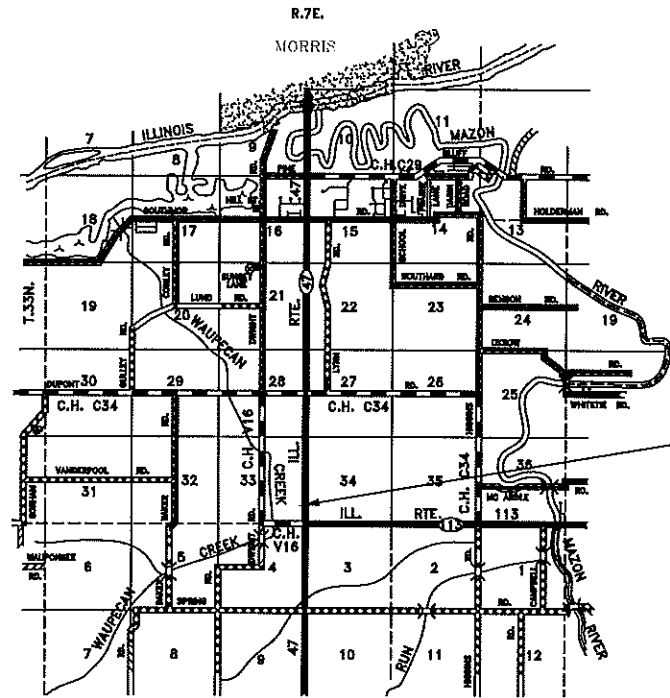
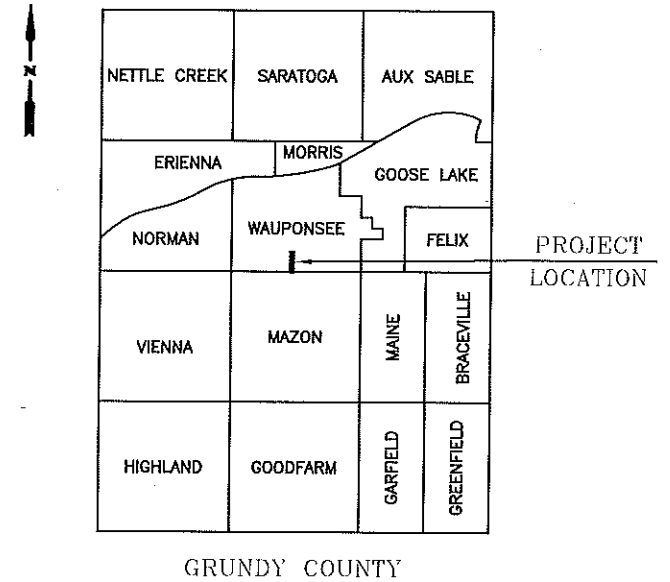


INDEX OF SHEETS

- 1 COVER SHEET, INDEX OF SHEETS, LOCATION MAP
- 2 GRADING PLAN
- 3 DIMENSIONAL LAYOUT PLAN

STATE OF ILLINOIS  
DEPARTMENT OF TRANSPORTATION  
DIVISION OF HIGHWAYS  
PLANS FOR PROPOSED  
MOTOR FUEL TAX  
PROGRAM PROJECT

COUNTY HIGHWAY SALT BUILDING PAVING - SECTION: 16-00163-00-PK, MFT  
GRUNDY COUNTY



LOCATION MAP

EXISTING PAVEMENT  
8" AGG BASE CSE.

PROPOSED IMPROVEMENT  
4" HMA BINDER  
2" HMA SUFACE

GROSS AREA SECTION: 16-00163-00-PK: 1,517 SY.  
OMISSION: 0 SY.  
NET AREA: 1,517 SY.

UTILITIES

J.U.L.I.E. SYSTEM - THE TOLL FREE TELEPHONE NUMBER FOR JOINT UTILITY LOCATING INFORMATION FOR EXCAVATOR IS 800-892-0123

THESE PLANS WERE PREPARED BY ME OR BY A FULL TIME MEMBER OF MY STAFF WORKING UNDER MY PERSONAL SUPERVISION.

APPROVED 6/6 2016  
*Craig J. Cassem*  
CRAIG J. CASSEM  
GRUNDY COUNTY ENGINEER

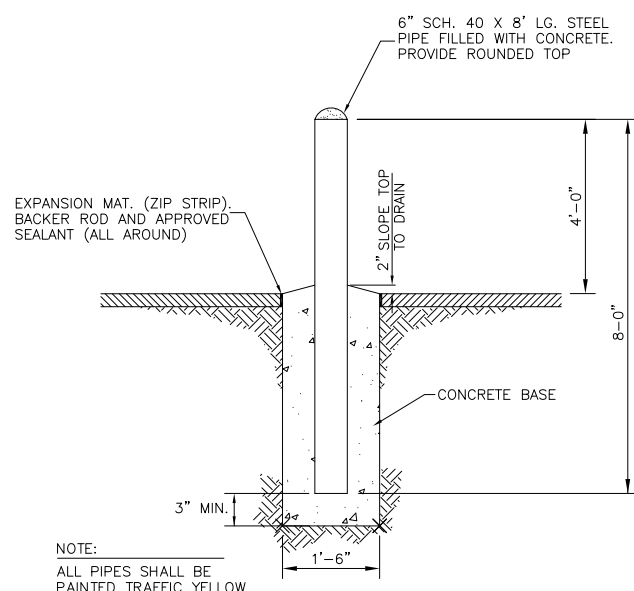
PASSED \_\_\_\_\_ 20\_\_\_\_  
DISTRICT ENGINEER OF LOCAL ROADS & STREETS

APPROVED \_\_\_\_\_ 20\_\_\_\_  
DISTRICT ENGINEER

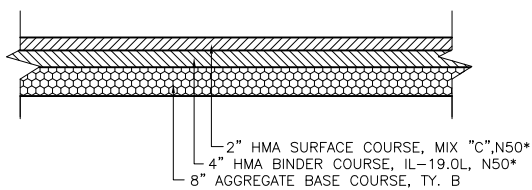
STATE OF ILLINOIS  
DEPARTMENT OF TRANSPORTATION

STATE OF ILLINOIS  
COUNTY OF GRUNDY  
COUNTY ENGINEER

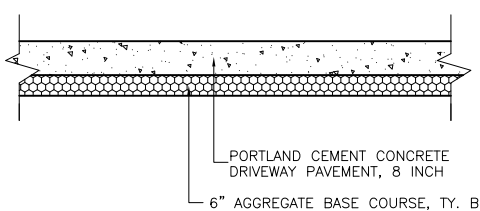
DRAWN: BMT	CHECKED: DMB	SCALE: NTS	DATE: 05-31-16
REVISED:	5-31-16		



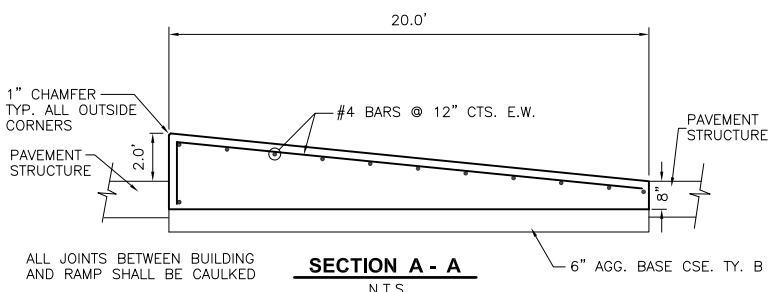
**PIPE BOLLARD DETAIL B**  
N.T.S.



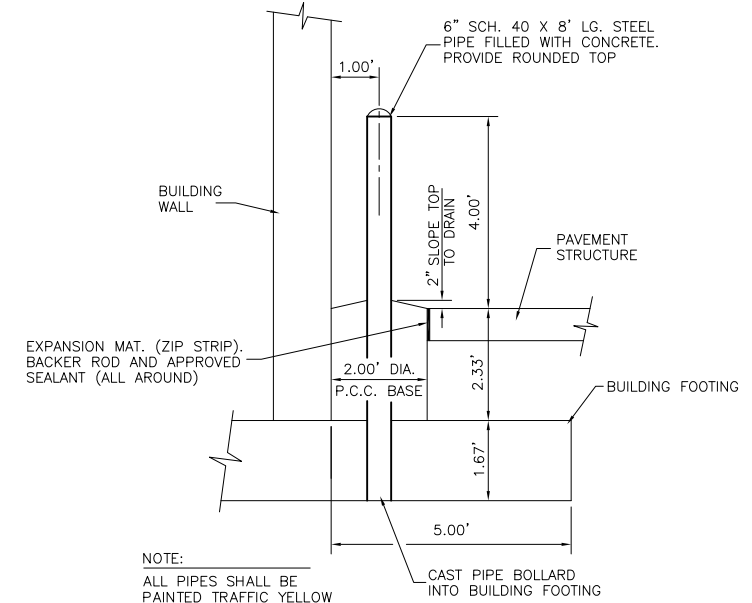
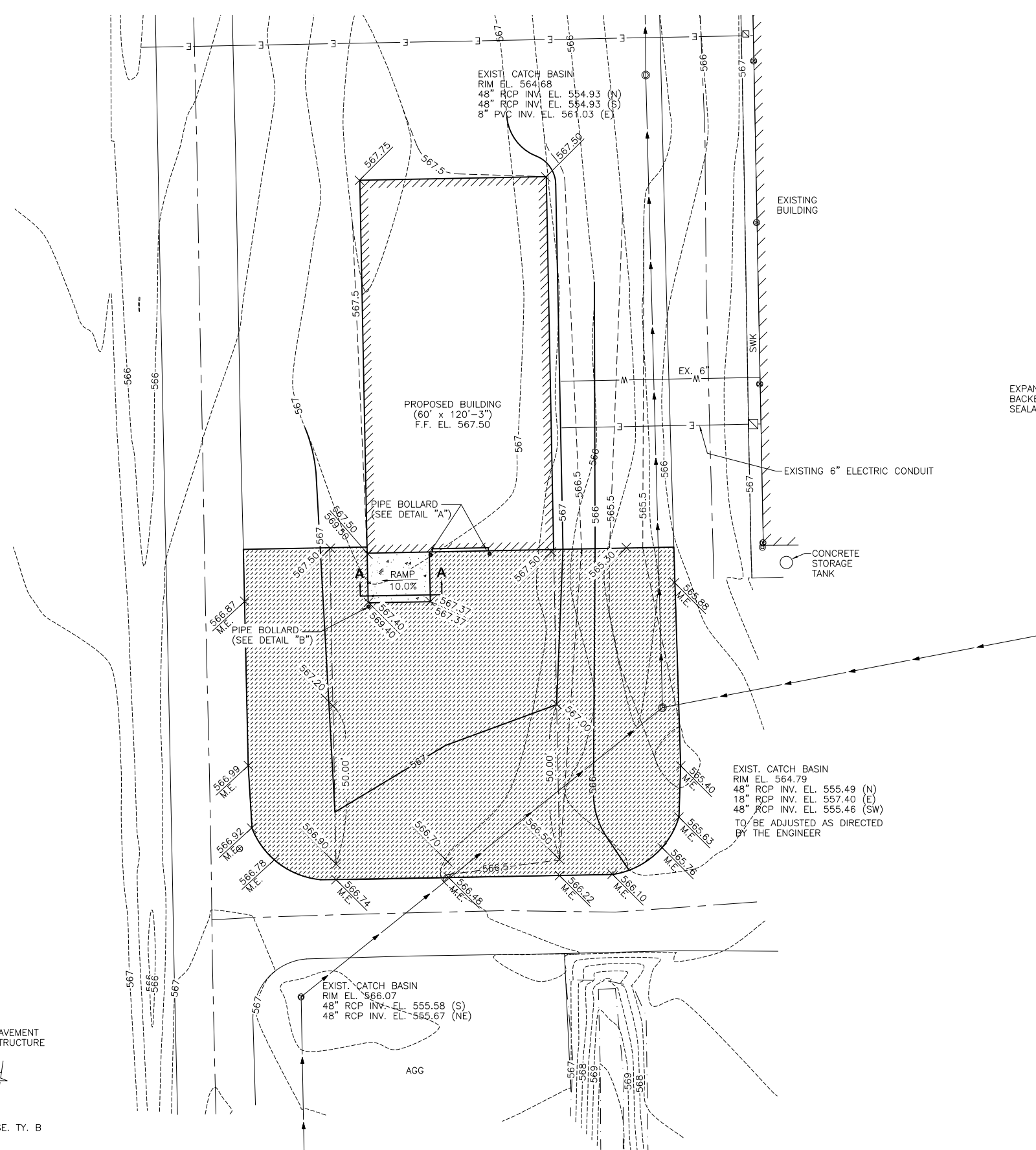
**HMA PAVEMENT SECTION (BASE BID)**  
N.T.S.  
(\*ELIMINATE HMA - ALTERNATE 1A)



**P.C.C. PAVEMENT SECTION (ALTERNATE 2A)**  
N.T.S.

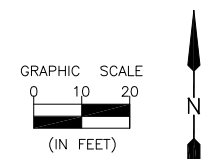


**SECTION A - A**  
N.T.S.



**PIPE BOLLARD DETAIL A**  
N.T.S.

**LEGEND**  
 HMA OR PCC PAVEMENT  
 SEE PROJECT MANUAL



CHAMLIN & ASSOCIATES, INC. © 2014  
 Drawing Name: G:\Users\j2346-02-cchd-Salt-Storage-Bldg-2014\CAD\C3D\PLAN.dwg Last Modified: Jul 12, 2015 - 11:36am by jmc  
 Jul 12, 2015 - 11:36am Plotted on: Jul 12, 2015 - 11:36am

DRAWN BY: NET	REVISIONS			
CHECKED BY: JKC	LEVEL	BY	DATE	DESCRIPTION
DATE: 2/14				

**CHAMLIN & ASSOCIATES, INC.**  
 PERU MORRIS ILLINOIS

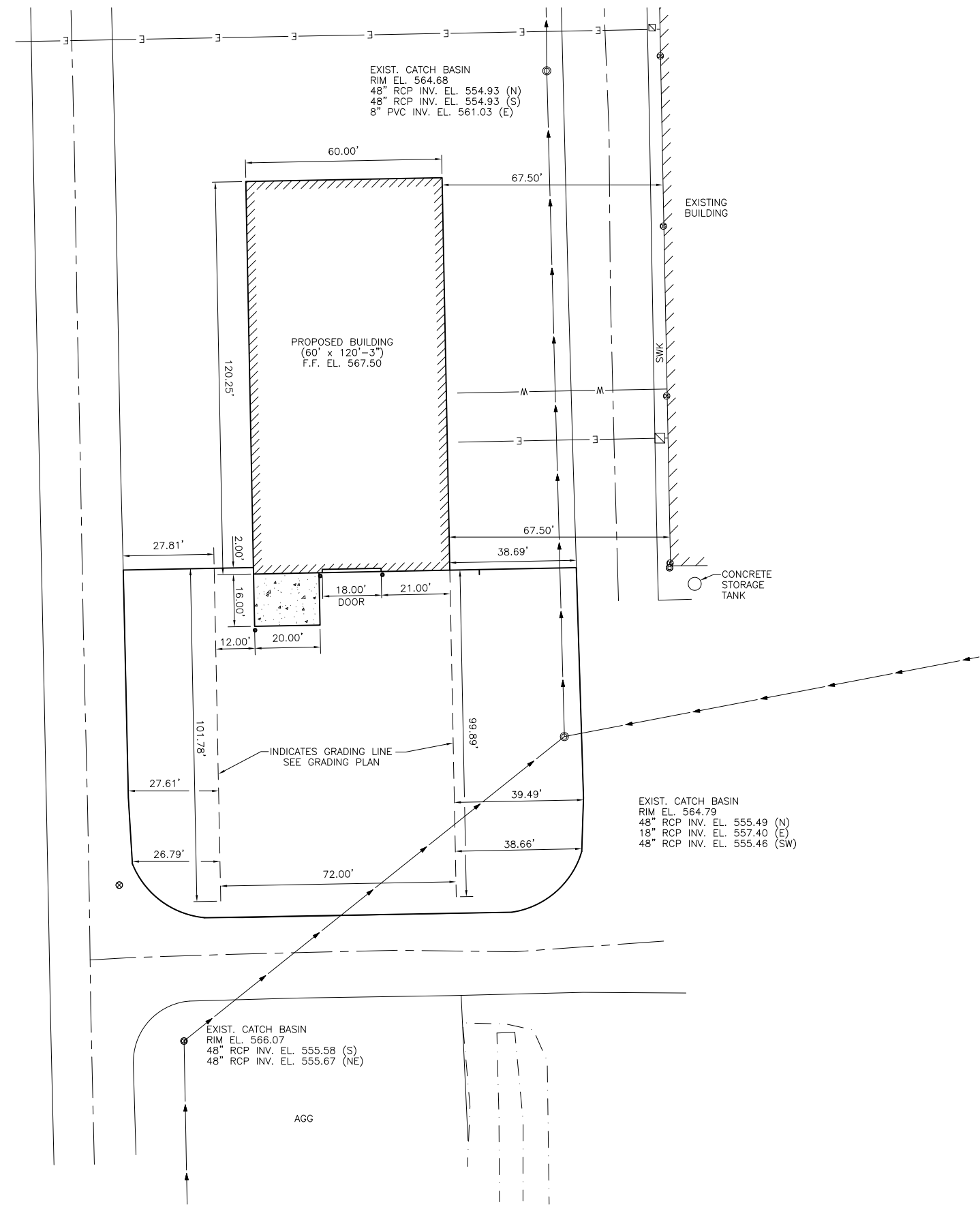
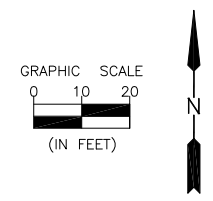
**GRUNDY COUNTY HIGHWAY DEPARTMENT**  
 SALT STORAGE BUILDING  
 FOUNDATION AND SITE WORK  
 JULY, 2015

**GRADING PLAN**

**CONSTRUCTION PLANS**

CURRENT AS OF: 7/1/15	
SCALE: AS NOTED	SHEET 2
FILE NO.: 2346.02 Y-	OF 7

CHAMLIN & ASSOCIATES, INC. © 2014  
 Drawing Name: G:\Users\j2346-02-CCHD-Salt-Storage-Bldg-2014\CAD\C3D\DIMLAY.dwg Last Modified: Jul 01, 2015 - 1:25pm Plotted on: Jul 12, 2015 - 11:12am by jmc



DRAWN BY: NET	REVISIONS			
CHECKED BY: JKC	LEVEL	BY	DATE	DESCRIPTION
DATE: 2/14				

**CHAMLIN & ASSOCIATES, INC.**  
 PERU MORRIS ILLINOIS

**GRUNDY COUNTY HIGHWAY DEPARTMENT**  
**SALT STORAGE BUILDING**  
**FOUNDATION AND SITE WORK**  
 JULY, 2015

**DIMENSIONAL LAYOUT PLAN**

**CONSTRUCTION PLANS**

CURRENT AS OF: 7/1/15	
SCALE: AS NOTED	SHEET 3
FILE NO.: 2346.02 Y-	OF 7